

An aerial night photograph of the Dubai skyline. The Burj Khalifa is the most prominent feature, standing tall in the center-left. Other skyscrapers are visible, including the BurjDubai. The city is illuminated with various colors of light, and the roads are filled with light trails from traffic. The overall scene is a vibrant and modern urban landscape.

Empyrean Edge

— *Business, beautifully redefined*

The background image shows a modern office interior. On the left, there is a circular glass-walled meeting room with a round table and several black office chairs. In the foreground, there is a lounge area with two orange armchairs and a low, round wooden coffee table. To the right, there is a glass display cabinet with various decorative items inside. The ceiling is curved and modern, and the floor is polished and reflective.

Contents

1. About Empyrean Edge

2. Location Advantage

3. A Flavor of Our Center



Empyrean Edge

Empyrean Edge Business Centre is a state-of-the-art business center located in the heart of Dubai's vibrant commercial hub, **Emaar Square**.

Designed for modern enterprises, it offers fully serviced, flexible workspaces, including enterprise solutions, managed offices, virtual offices, and high-spec meeting rooms—all within a premium, future-ready environment.

Our comprehensive ecosystem covers company formation, nominee and compliance services, and executive administrative support, ensuring operational efficiency and business continuity in a secure and professional setting.

Whether you're a startup, a growing SME, or a global firm, Empyrean Edge is where ambition is empowered, innovation is nurtured, and businesses thrive.

We bring the trusted **CorporatEdge** brand to Dubai through a strategic partnership. CorporatEdge, with strong intellectual property, technology infrastructure, and franchise support, enables Empyrean Edge to deliver premium, hospitality-driven business centers tailored to Dubai's dynamic market.

Empyrean Edge isn't just a space—it's where ambition meets opportunity.

A Destination Address: Emaar Square, Downtown, Dubai

Unparalleled connectivity and a commanding location in the heart of Dubai.

- Adjacent to Burj Khalifa and The Dubai Mall
- Strategically located on Sheikh Mohammed bin Rashid Boulevard
- 500 mtr to Burj Khalifa
- 800 mtr to the Dubai Mall Metro Station
- Seamless access to Sheikh Zayed Road and Al Khail Road
- 20 minutes from Dubai International Airport
- Surrounded by 5-star hotels: Address Downtown, Armani Hotel, Palace Downtown
- Walkable to top dining spots: Pret A Manger, Ultra Brasserie, Mamma Italia
- Direct access to The Dubai Mall and Dubai Opera
- Proximity to DIFC, Business Bay and key residential areas like Downtown, City Walk, Jumeirah



Emaar Square— The Heart of Business & Lifestyle



Grade-A Commercial Complex
Emaar's premium business complex
with six modern office buildings.



Expansive, Flexible Office Space
Over 1.5 million sq. ft. of office space,
ideal for corporates and GCCs



Sustainable & Wellness-Focused Architecture
Built with energy-efficient systems and
wellness-focused design elements



Integrated Lifestyle & Business Amenities
Surrounded by cafes, restaurants, retail stores,
banks, and fitness centers



Smart Building Infrastructure
High-speed elevators and advanced tech &
telecom connectivity throughout



24/7 Concierge & Security
Round-the-clock guest services and
security for seamless operations

The Offitel Edge: More Than Just an Office!



31,000 sq
ft area



1-100+ Workstations
Configuration Suites



6 Meeting
Rooms



Concierge
Services



Managed Enterprise
Solutions



Phone Booth &
Collaborative Areas



Business Support Services



Collaborative Growth



Personalized Reception



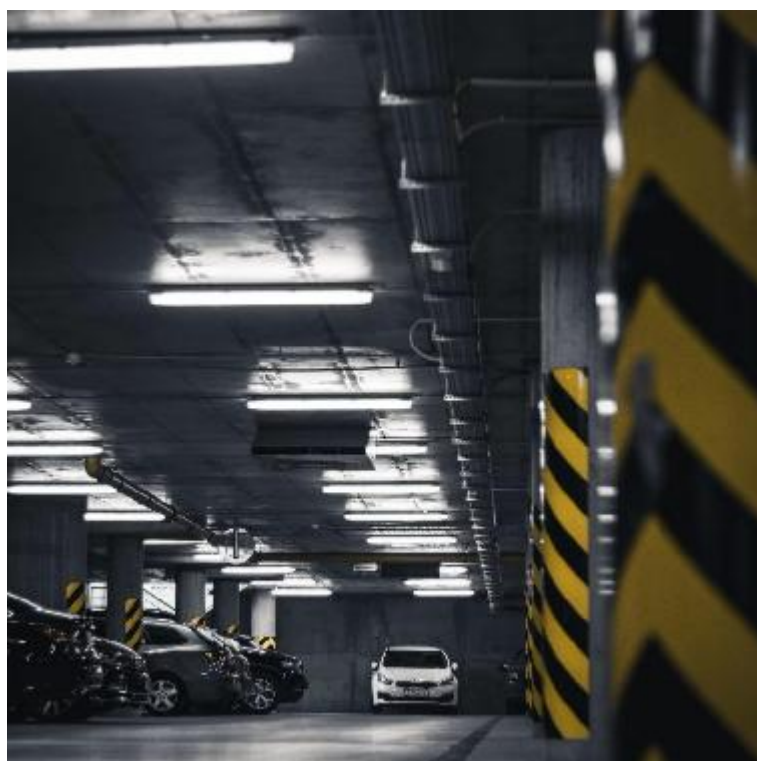
Open Space - Meet & Greet



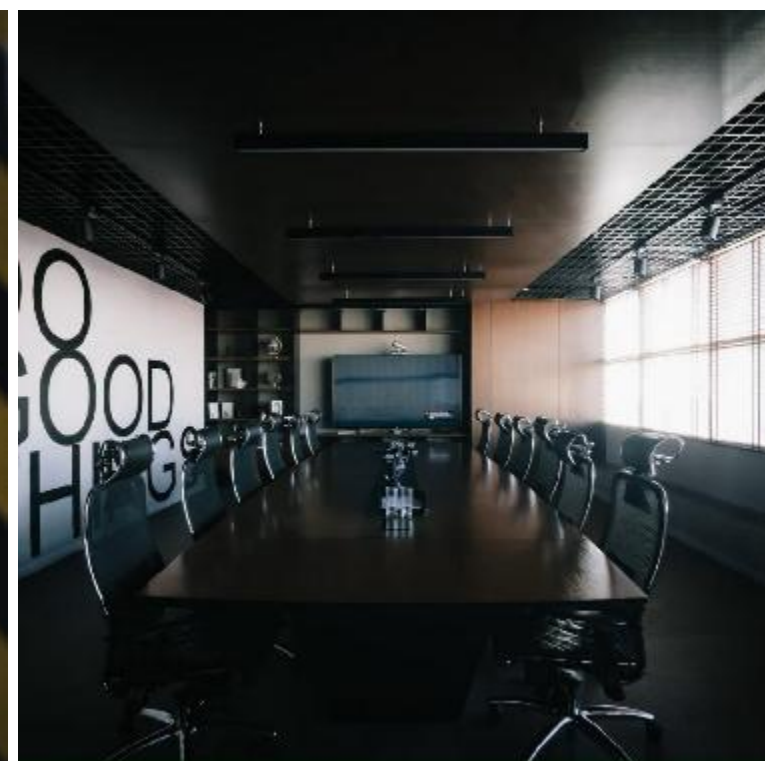
Lounge Areas

First-Class Infrastructure & Seamless Services

Onsite Parking Facility



Meeting & Conferencing



CCTV & Access Control



Phone & Mail Handling



Internet & IT Infrastructure



What We Offer

Customizable office solutions for businesses of all sizes, balancing privacy and collaboration.

Flexible Workspaces

Prestigious business address with mail forwarding & call handling for a professional image.

Virtual Offices

Open workspaces designed to encourage creativity and networking for freelancers

Co-Working Desks

Empyrean Edge delivers a comprehensive range of corporate services with confidence and expertise. We specialize in **legal, finance and accounting, marketing, real estate, HR, procurement and sourcing, as well as ESG and sustainability, software development**, all through our strategic partners.

Conference Rooms

Fully equipped spaces for meetings and video conferencing.

Company Setups

Expert guidance for setting up and complying with legal and regulatory requirements.

Event Venues


Premium spaces for corporate events, workshops, and seminars.

Existing Clientele

BOMBARDIER

 **MAERSK**
LINE


GAMELOFT

 Mitsubishi Corporation


MITSUI & CO.


SAMSUNG

 **HERO**
CYCLES


AMERICAN
EXPRESS

M G I
CAPITAL

EVERSTONE

 **Arcesium**

 **IQVIA**

 **cytiva**


Adobe

HYATT


BIRLA ESTATES


TATA REALTY

 **BNP PARIBAS**
REAL ESTATE



Hilton

 **Royal Bank**
of Scotland

 **INVEST INDIA**
NATIONAL INVESTMENT PROMOTION
& FACILITATION AGENCY

 **Expedia**

 **tinder**

 **GE HealthCare**

BOSE K E A R N E Y

 **airbnb**


CISCO

Uber

BBC
WORLD

 **LE CORDON BLEU**

indeed

 **Hotels.com**

GALLUP

 **Match**
Group


Unilever


VOLVO


hp

 **NatWest**


Levi's

ADITYA BIRLA

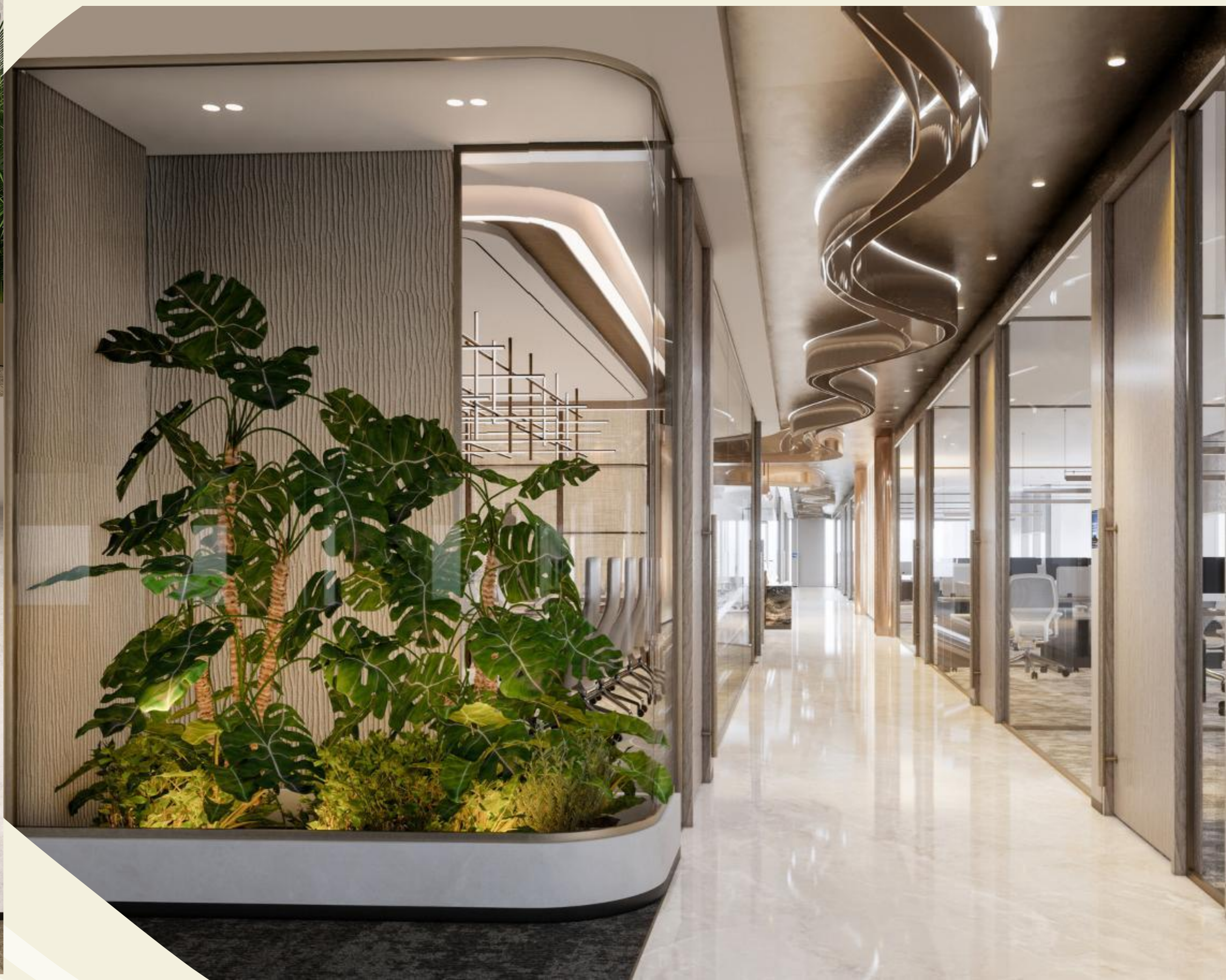
FASHION & RETAIL


brother
at your side

A Flavor of Our Center





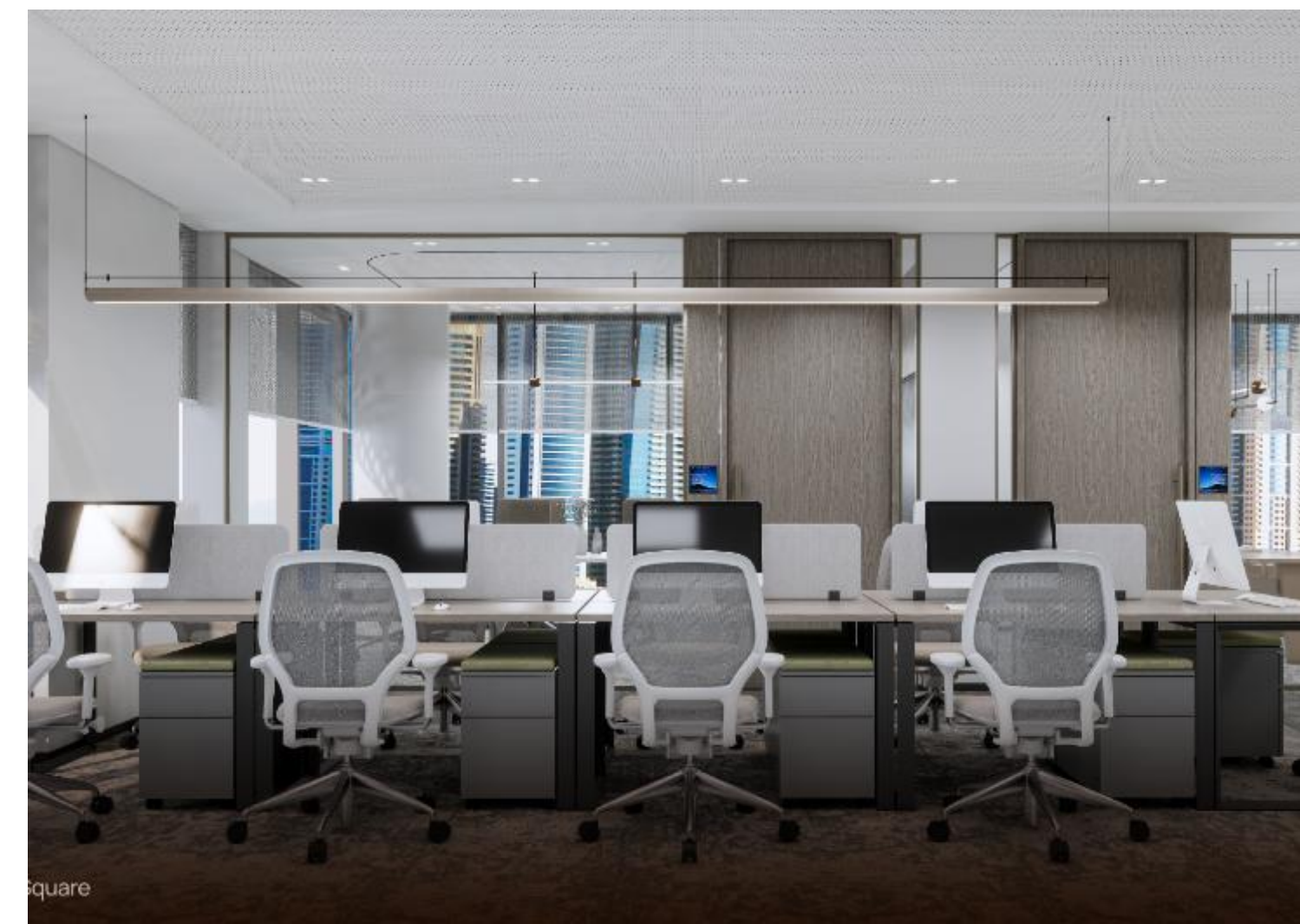




4, Emaar Square



Director Cabin, Emaar Square



square



CORPORATEDGE

WORLD'S FIRST OFFITELS

1270+

Companies served

59%

Large Corporates & MNCs

31%

Small & Medium Enterprises

10%

Startups

Your Premium Office Journey Begins Here. Let's Co-Create It!

salesgroup.dxb@thecorporatedge.com | www.thecorporatedge.com